

This study evaluates three main themes:

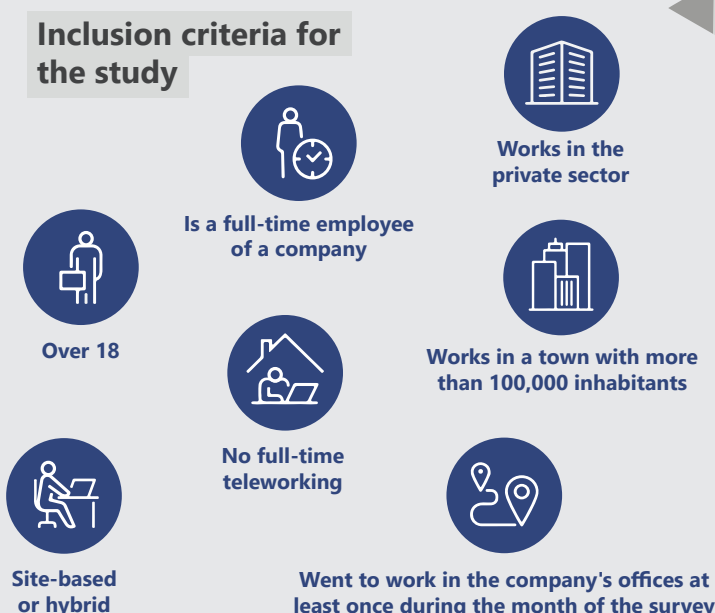
- Perceived comfort of the office working environment
- Quality of life and working conditions
- Commuting experience

Our research sample is made up of 1,211 individuals who answered around 100 questions. 5 European countries were targeted: France, Germany, Spain, the United Kingdom and the Netherlands.

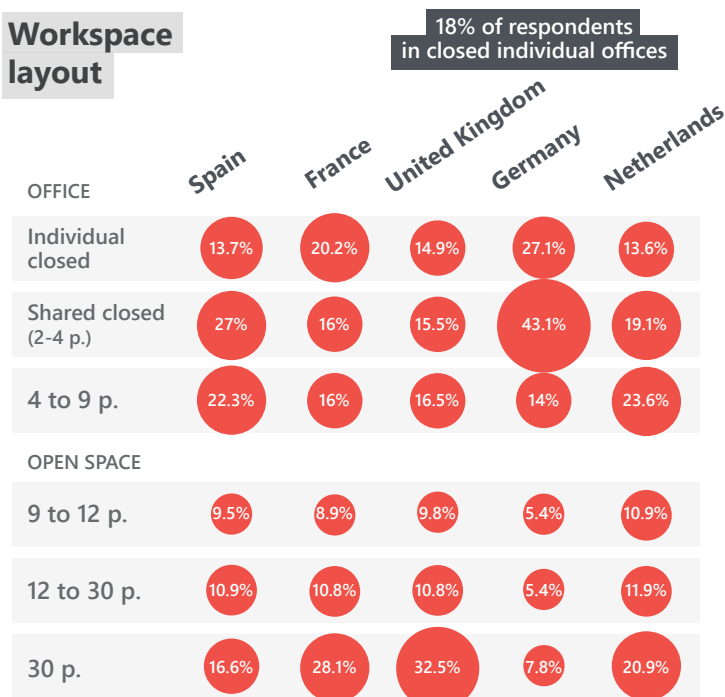
Access all of Urban Ways at:

www.kardham.com/EN/Urban-ways.html

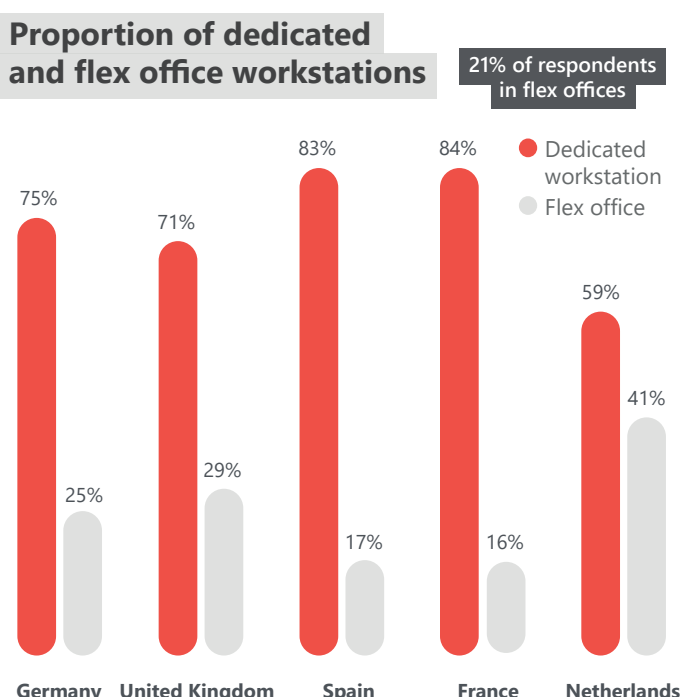
Inclusion criteria for the study



Workspace layout



Proportion of dedicated and flex office workstations



Proportion of users by transport and by country

Several means of transport are possible per person.

CAR

Germany 68%
Spain 66%
Netherlands 63%
United Kingdom 61%
France 55%

UNDERGROUND

France 48%
Germany 35%
Spain 25%
Netherlands 21%
United Kingdom 10%

TRAIN

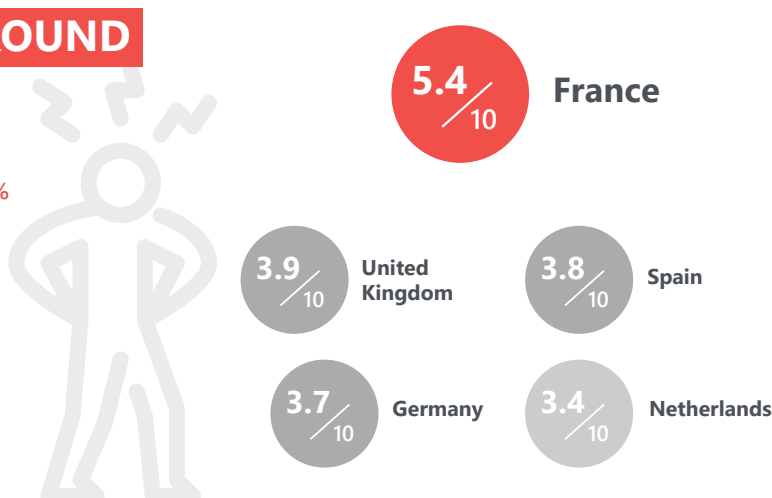
Germany 30%
United Kingdom 24%
Spain 11%
France 2%
Netherlands 1%

BICYCLE

Netherlands 30%
Germany 10%
France 8%
United Kingdom 7%
Spain 4%

Transport stress by country

French respondents report the most transport-related stress (pressure, inefficiency, safety, congestion)



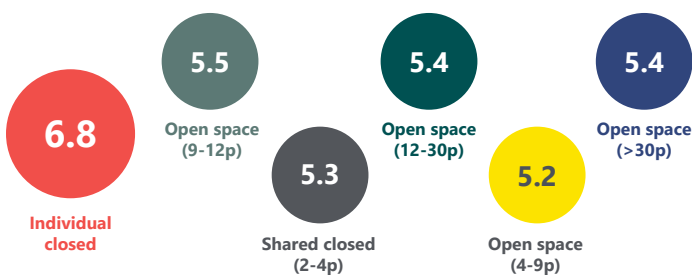
Overall comfort and flex office

Overall comfort satisfaction index by workstation assignment.



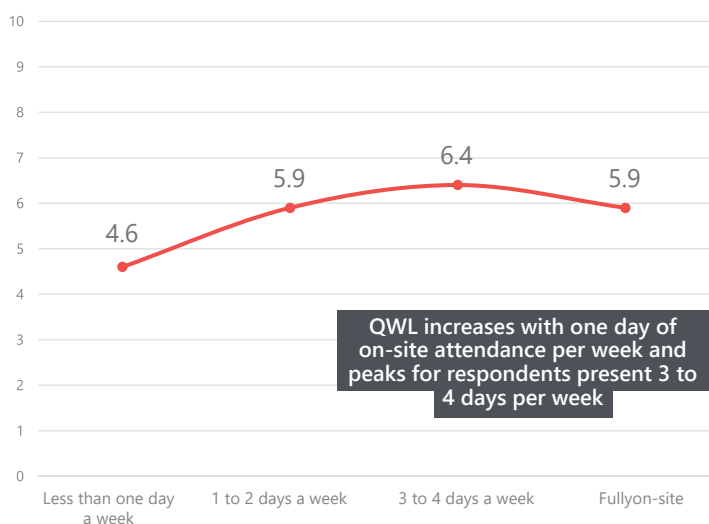
Overall comfort by office type

Overall comfort satisfaction index by type of workspace on a scale of 1 to 10.

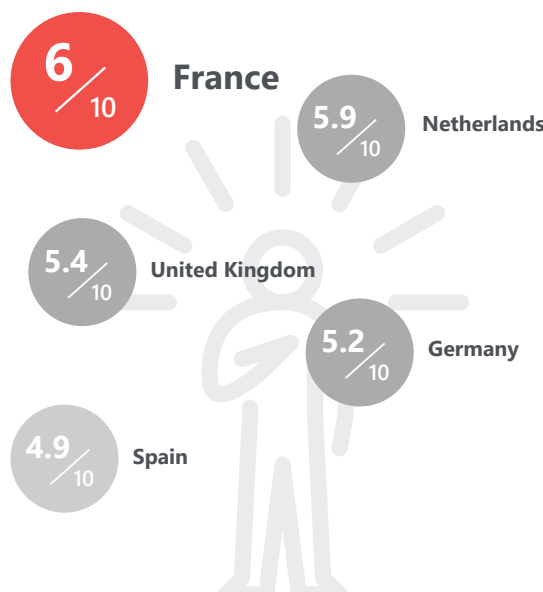


Quality of life at work and presence in the office

Overall Quality of Working Life Index based on the number of days spent in the company's offices (out of 10).



Worker comfort in Europe



Profile of an ideal structure

The combinations with the highest scores.

